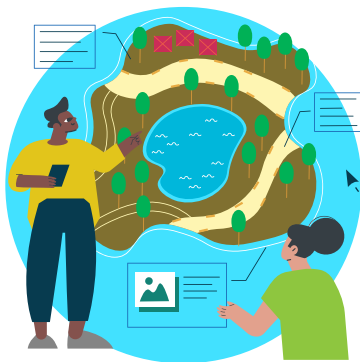




# THE BOUGAINVILLE **NATURAL RESOURCE** PORTAL

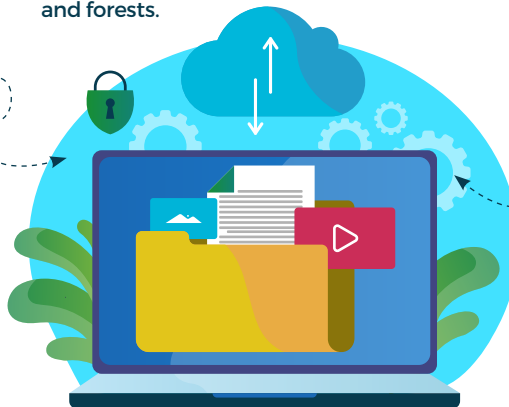
An open-source online platform where local data can be easily uploaded, accessed and shared for making informed natural resource decisions.

THE BOUGAINVILLE NATURAL RESOURCE (NR) PORTAL IS DESIGNED TO BE:



**2 A SPACE** where specialist organizations, academic institutions and ongoing local projects can share data.

**1 A PORTAL** for accessing information on Natural Resources Management (NRM), for example data on mangroves, coral reefs, and forests.



**3 A DECISION-SUPPORT TOOL** for policy makers, civil society organisations and other stakeholders who want to monitor natural resources, and turn commitment into action.

## WHAT DATA AND RESOURCES CAN YOU FIND ON THE BOUGAINVILLE NR PORTAL?



**INTERACTIVE AND STATIC MAPS** that can be viewed and created.



**AN INTEGRATED GEONODE** (see overleaf) with spatial and non-spatial data for download and analysis.



**A DATA-SHARING SPACE** for internal and external stakeholders.



**MULTIMEDIA "GEOSTORIES"** that use text, interactive maps, images and video to tell the stories in geographical data.

## WHY IS THE BOUGAINVILLE NR PORTAL IMPORTANT?



### FOR LOCAL AND INTERNATIONAL POLICYMAKERS AND ACADEMICS:

The knowledge system makes it easy to store information, including data, images, and documents. Local Project staff can also upload data after a project's completion, meaning it is available for longer-term reference and re-use.



### FOR CIVIL SOCIETY ORGANISATIONS AND OTHER LOCAL STAKEHOLDERS:

The Hub is completely open-access, allowing for easy sharing of information and coordinated action in the interest of Bougainville's people and environment.



### FOR LOCAL COMMUNITIES:

The Hub is a powerful tool for communicating around environmental issues, such as biodiversity loss and climate change. It is also a space for connecting with local residents, who today are more digitally engaged and connected than ever before, can understand more about their local environment and the consequences of unsustainable practices.

### WHAT IS A GEONODE?

GeoNode is an open-source tool and widely used framework for accessing and managing geospatial data in a web browser. The Bougainville Environment

Hub has an integrated GeoNode built into the site, which can stream directly into desktop GIS software if needed. This simple, interactive tool allows even non-technical users to easily preview, access, upload and download all the NRM data they need.



SCAN TO ACCESS  
WEBSITE OR VISIT  
[BOUGAINVILLE-NR.ORG](http://BOUGAINVILLE-NR.ORG)



## THE BOUGAINVILLE NR HUB TIMELINE

### PHASE 1

Soft launch of the Bougainville NR Portal.

### PHASE 2

Capacity-building with Autonomous Bougainville Government and counterparts.

### PHASE 3

Co-development of stories and themes complementary communications products.

Uptake of data into policy and programming