



THE UNDP PAPUA NEW GUINEA NATURAL RESOURCE MANAGEMENT HUB

INTRODUCING NEW RESOURCES TO GUIDE
DECISION-MAKING ON NATURAL RESOURCE MANAGEMENT

UNDP PAPUA
NEW GUINEA
NATURAL
RESOURCE
MANAGEMENT
HUB



Lukim
Gather

BIODIVERSITY AND
CLIMATE GEOPORTAL

PNG Biodiversity

IF WE CANNOT MEASURE WHAT WE WISH TO MANAGE,
IF WE CANNOT SEE WHAT WE WISH TO SAVE, HOW
CAN WE UNDERSTAND THE CONSEQUENCES IF
NOTHING IS DONE?

PROJECT INTRODUCTION

The UNDP Natural Resource Management Hub (NRM Hub) is an online platform housing a range of support tools designed to help policymakers, civil society organizations and other stakeholders make informed decisions on natural resources and sustainable livelihoods in Papua New Guinea (PNG).

Taking data from a variety of sources, the NRM Hub can assist with project planning, reporting and evaluation of natural resource processes. This includes a variety of use cases such as: collecting data from communities in

Protected Areas; making global spatial data available for mapping at the local level and sharing data in new ways through interactive articles and visualisations. This collection of tools aims to improve environmental policies and prioritise investments to secure long-term sustainable use of natural resources.



RATIONALE

The health and well-being of natural and human ecosystems are key to the sustainable development of Papua New Guinea. If the country's environmental resources are to be managed collectively and effectively,

decision-makers and others need access to sound information, in an appropriate format, tailored according to their needs and requirements.

THE UNDP NATURAL RESOURCE MANAGEMENT HUB

Papua New Guinea is a country with immense biodiversity and a wealth of resources. The country's rapid digitilisation has increased access to information and technologies. UNDP has leveraged this exciting transformation to launch the UNDP Papua New Guinea Natural Resource Management Hub. The NRM Hub provides online for collecting, sharing and managing

environmental information from local, national and international sources. These tools are purpose-built to help policymakers, civil society organizations and other stakeholders make informed decisions on natural resources and sustainable livelihoods in Papua New Guinea (PNG).

SOME BENEFITS OF THE NRM HUB



THIS FREELY ACCESSIBLE TOOLKIT ALLOWS STAKEHOLDERS TO

- 1.** Collect and track information and make decisions about natural resource management in the region
- 2.** Communicate this information effectively
- 3.** Coordinate decision-making and actions

WHO IS THE NRM HUB FOR AND WHY IS IT IMPORTANT?



POLICYMAKERS



CIVIL SOCIETY ORGANISATIONS



UNIVERSITIES



UN AGENCIES



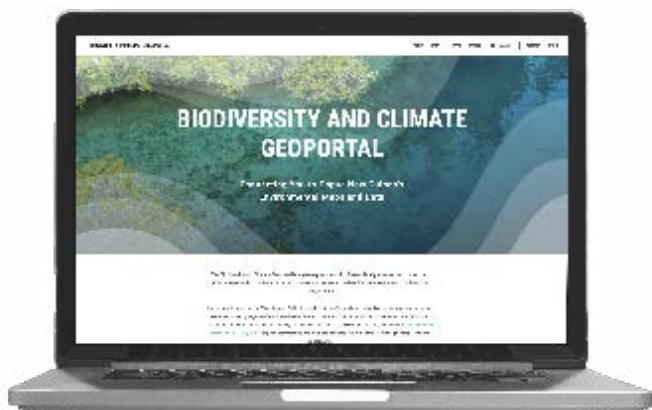
TECHNICAL ANALYSTS



OTHERS WHO ARE INTERESTED IN NRM DATA

All tools have both private and public interfaces. The public interface allows civil society organizations and local stakeholders to access data and share information.

THE BIODIVERSITY AND CLIMATE GEOPORTAL



VISIT WWW.PNG-NRMHUB.ORG

The Biodiversity and Climate Geoportal (BCG) is an open-source, web-based platform for developing geospatial (i.e. mapping) information systems and publishing updates and data on Papua New Guinea's natural resources. It also supports applicants and grantees of the Biodiversity and Climate Fund (BCF), allowing them to upload data to support their proposals, monitor their achievements and evaluate the effectiveness of investments. By providing an online space for such tasks, the BCG helps users to avoid the time, travel and economic cost of making in-person visits.

WHAT CAN YOU DO WITH THE BCG?

THE BIODIVERSITY AND CLIMATE GEOPORTAL (BCG) WILL ALLOW USERS AND GRANTEES TO:



ACCESS TRAINING ON HOW TO BEST USE SPATIAL DATA TO SUPPORT GRANT PROPOSALS



UPLOAD REGULAR AND LIVE PROJECT UPDATES AND ENVIRONMENTAL DATA



PUBLISH AND PROMOTE ENVIRONMENTAL STORIES THROUGH INTERACTIVE MAPS AND ARTICLE

THE BIODIVERSITY AND CLIMATE FUND

UNDP is establishing the independent Biodiversity and Climate Fund (BCF) with funding from the Global Environment Facility under the *Sustainable Financing of Papua New Guinea's Protected Area Network* project, in partnership with PNG's Conservation and Environmental Protection Authority.

This seven-year effort aims to secure stable, long-term financial resources to make the management of local Protected Areas more cost-effective and efficient.



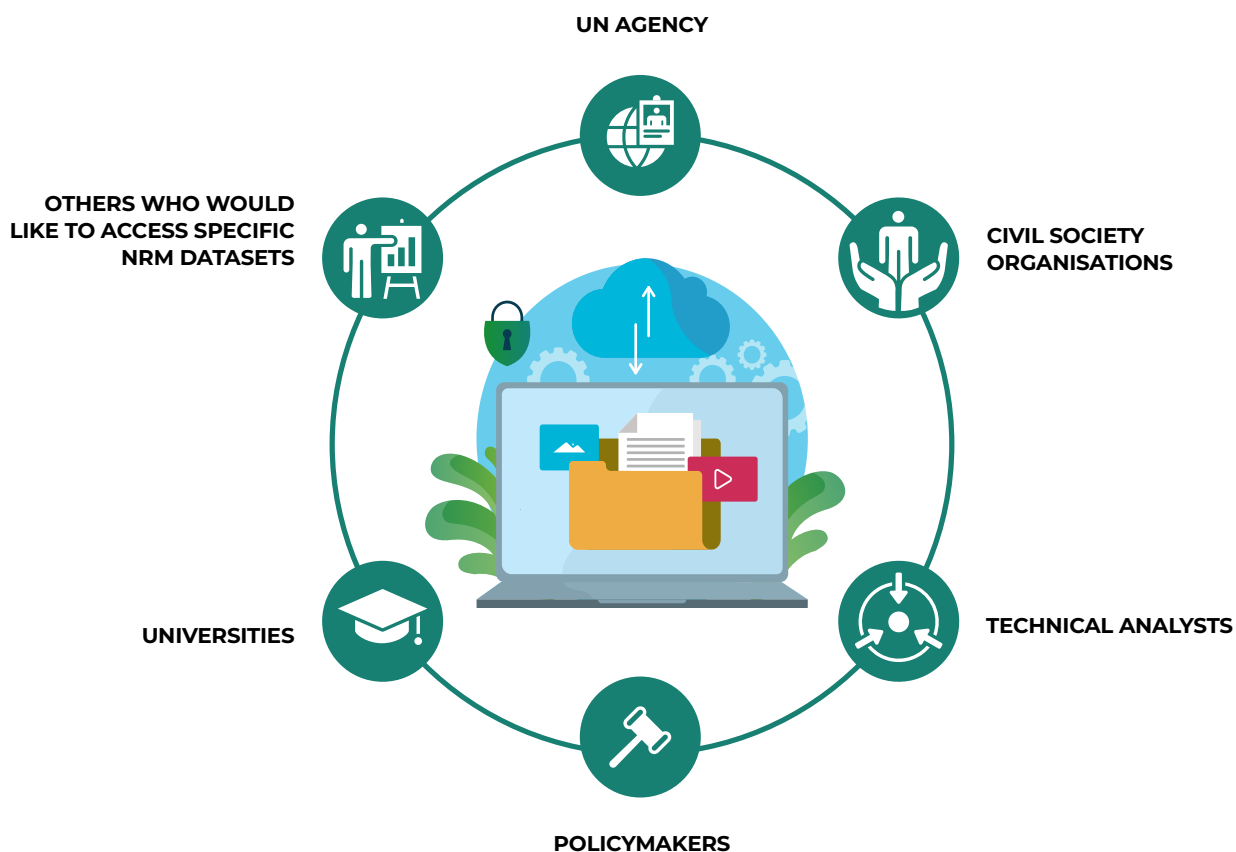
THE BOUGAINVILLE NATURAL RESOURCE PORTAL



VISIT BOUGAINVILLE-NR.ORG

The Bougainville Natural Resource Portal provides a digital space for publishing data and updates on environmental projects in the Autonomous Region of Bougainville. This provincial pilot, developed as a testing point for the national Geoportal, allows for the sharing, uploading, and visualization of data pertinent to the area pertinent to the area. This will ensure long-term reference and use of data long after project completion. To facilitate this process, an integrated Geonode allows non-technical users to access, download and analyse spatial and non-spatial online repositories and using desktop GIS software.

WHO IS THE BOUGAINVILLE NATURAL RESOURCE PORTAL FOR AND WHY IS IT IMPORTANT?

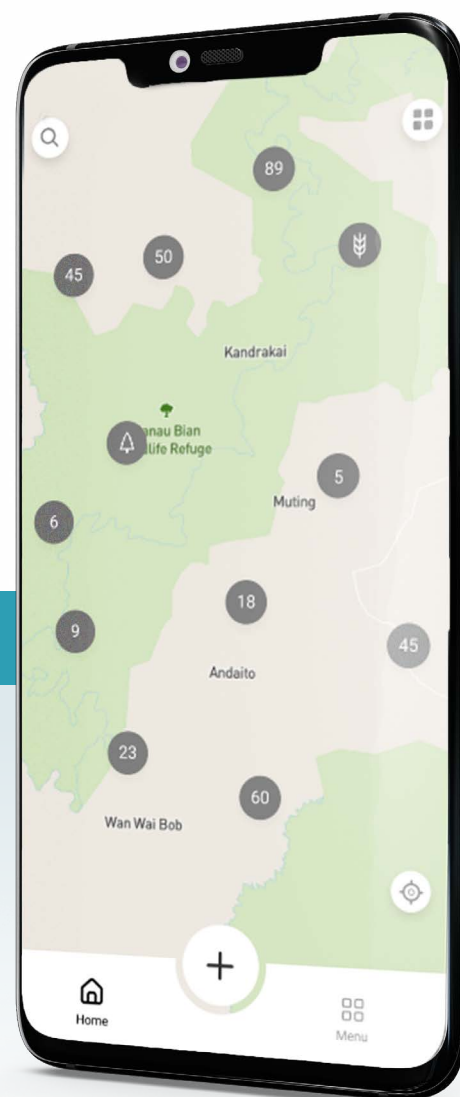


Open access to this cloud-based knowledge system means that **both local and international stakeholders can easily store and share information** on the Autonomous Region of Bougainville's natural resources. This can contribute to the kinds of coordinated action that can best serve the interests of the region's people and environment.

The Bougainville Natural Resource Portal can be used to engage with local residents to share and receive information on environmental issues such as biodiversity loss and climate change. The portal allows them to create or download maps of their village with overlays of natural resource data that may affect them.

THE LUKIM GATHER APP

Lukim Gather was initially designed by UNDP in partnership with the national Conservation and Environmental Protection Authority (CEPA) as a mobile data collection app for park rangers for streamlined reporting of issues (e.g., poaching, logging) as well as monitoring of conservation efforts. The second phase of the app targets protected area community leaders and members as the core user group and focus initially on the easy and accurate collection of georeferenced field-level data, which can assist in conservation decision-making and improve biodiversity monitoring. This innovative mobile technology is helping to overcome many of the geographical, infrastructural, and technological challenges that prevent the effective tracking and management of natural resources within the region.



WHAT DOES THE LUKIM GATHER APP DO?

Because it is able to function offline and out of range of phone signal, the Lukim Gather app enables communities in remote protected areas to:

- **Collect and share social and environmental information about protected areas**
- **Improve the management of their biodiversity and raise awareness about threats**, including illicit activities
- **Contribute to assessments** which can improve planning at provincial, national, and regional levels

WHO IS THE LUKIM GATHER APP FOR AND WHY IS IT IMPORTANT?



THE APP IS DESIGNED TO SERVE:



**LOCAL
COMMUNITIES**



**PROTECTED
AREA MANAGERS**



**CIVIL SOCIETY
AND NON-
GOVERNMENTAL
ORGANIZATIONS**

It enables local communities to report both threats, perceived benefits and values that occur within protected areas. It does this by empowering users to collect and share data about their environment, ensuring that Papua New Guinea's rich biodiversity is afforded greater protection.

PNG BIODIVERSITY WEBSITE

The PNG Biodiversity website is an online toolkit for protected areas (PAs) in PNG.

The establishment of PAs enables local communities to be better stewards in protecting their natural resources. This digital toolkit provides a range of resources and information to support them, including on history, targets, legislation, activities, reports, financing and advocacy.



THE PNG BIODIVERSITY WEBSITE IS DESIGNED TO HELP:



COMMUNITIES AND ORGANISATIONS INTERESTED IN ESTABLISHING AND MANAGING A PA



EXTERNAL ORGANISATIONS INTERESTED IN NATIONAL CONSERVATION EFFORTS



STAKEHOLDERS INTERESTED IN SHARING AND LEARNING ABOUT OTHER CONSERVATION INITIATIVES.

WHAT CAN I FIND ON THE PNG BIODIVERSITY WEBSITE?



- **Templates and checklists** to support the establishment of protected areas
- **Management guidelines**
- Support for conducting the **PNG-Management Effectiveness Tracking Tool assessment**.
- **Guidance documents** from UNDP and CEPA on sustainable financing and managing protected areas in PNG

ROADMAP

In 2022, the NRM Hub has established the technical infrastructure for several interoperable and open-source digital products:

- **The Bougainville Natural Resource Portal:** a provincial data-sharing tool in the Autonomous Region of Bougainville
- **The Biodiversity and Climate Geoportal:** a national data-sharing tool
- **The Lukim Gather App:** a mobile data-collection app for environmental monitoring
- **PNG Biodiversity:** a toolkit of resources for establishing and managing protected areas

These products have been designed to address the needs of project staff and to support wider government and UN initiatives. The development of these products is being accompanied by a research and design process that aims to reveal current barriers stakeholders in PNG face when accessing and using environmental data in their work. This research will inform the design of new tools through the development of user personas. It will further ensure that future capacity-building and technical support can be delivered in the most appropriate, useful and culturally sensitive manner.

TIMELINE

PHASE 1

APRIL 2022

Soft launch of the Bougainville NR Hub

PHASE 2

MAY 2022

Soft launch of the PNG NRM Hub and piloting begins for the Lukim Gather App

PHASE 3

JUNE 2022

Publication of the 2022 Environmental Analysis for the UN Common Country Analysis

CAPACITY BUILDING AND FURTHER IMPLEMENTATION

“ REAL RESULTS WILL EMERGE WHEN WE REALIZE THE POWER OF COMBINED INDIVIDUAL ACTIONS AND VOICES TO EFFECT CHANGE. ”

FUNDED BY

